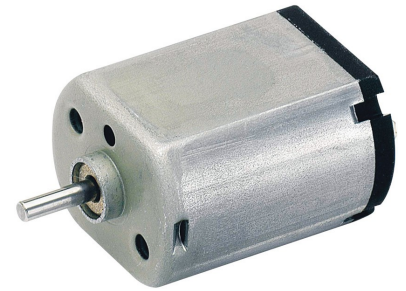


Characteristics:

Compact Size Motor

Specifications:

Dimensions	: Ø 15.5 X 12.0 X 18.6 mm
Shaft Diameter	: Ø 1.505 mm
Input Voltage	: 5.0 V DC
No Load Speed	: 12623 rpm
No Load Current	: 0.06 A
Stall Torque	: 2.09 mNm
Stall Current	: 0.64 A
Maximum Output Power	: 0.69 W
Maximum Efficiency	: 50 %
Speed at Maximum Efficiency	: 9602 rpm
Life (typical)	: 17 hr
Weight	: 10 g
Operation Temperature	: -20 to 70 °C
Storage Temperature	: -40 to 85 °C
Electrical Connection	: Terminal

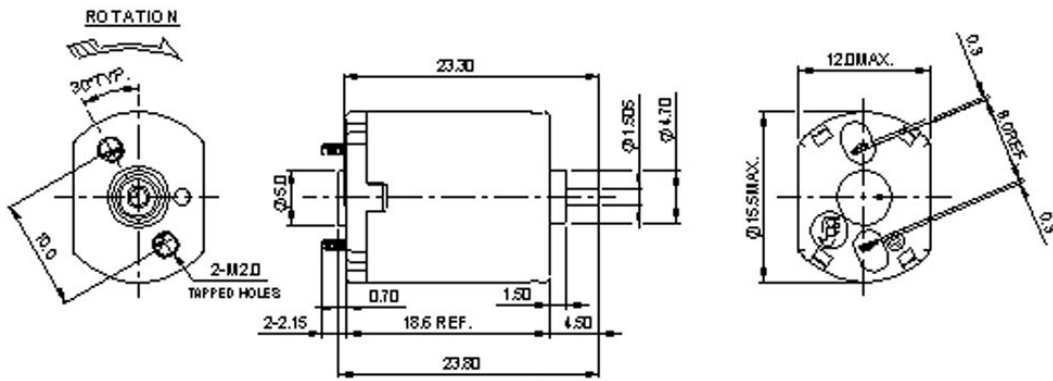
**Performance Data:**

	No Load	Stall	Max Efficiency	Max Power
Current (A)	0.06	0.64	0.20	0.35
Efficiency (%)	-	-	50	-
Output Power (W)	-	-	0.50	0.69
Speed (rpm)	12623	-	9602	6312
Torque (mNm)	-	2.09	0.50	1.05

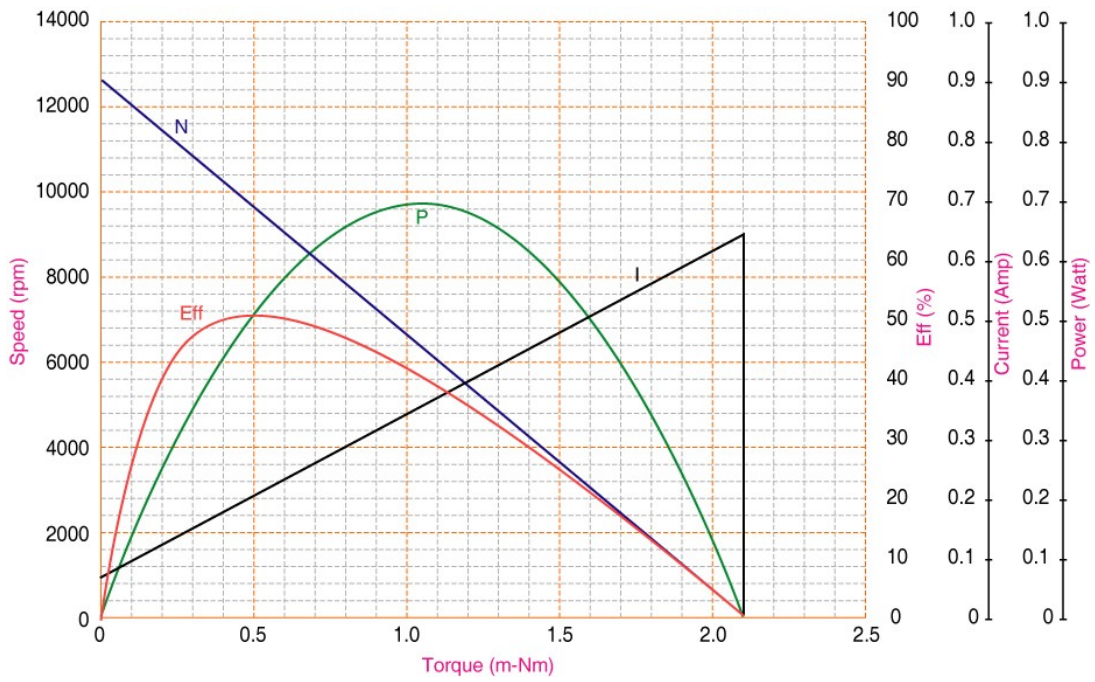
Application Examples:

Locks, Door Locks

Drawing:



Performance Curves:



Units in Metric