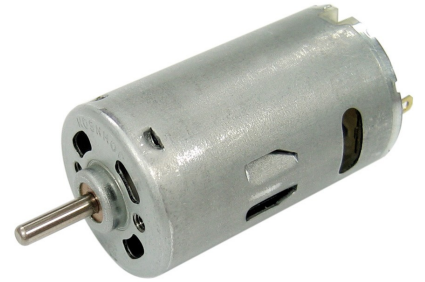


Characteristics:

High Power DC motor

Specifications:

Dimensions	: Ø 27.5 X 46.5 mm
Shaft Diameter	: Ø 2.305 mm
Input Voltage	: 36.0 V DC
No Load Speed	: 11000 rpm
No Load Current	: 0.10 A
Nominal Speed	: 9700 rpm
Nominal Torque	: 13.00 mNm
Nominal Current	: 0.50 A
Stall Torque	: 90.00 mNm
Stall Current	: 3.00 A
Maximum Output Power	: 25.00 W
Maximum Efficiency	: 70 %
Torque at Maximum Efficiency	: 12.00 mNm
Speed at Maximum Efficiency	: 9500 rpm
Life (typical)	: 150 hr
Weight	: 90 g
Operation Temperature	: -10 to 55 °C
Storage Temperature	: -20 to 80 °C
Electrical Connection	: terminals



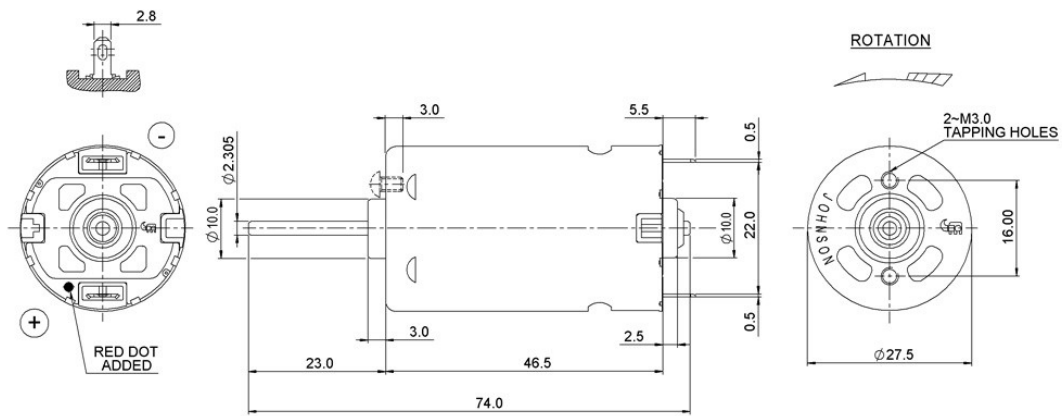
Performance Data:

	No Load	Stall	Max Efficiency	Max Power
Current (A)	0.10	3.00	0.45	1.50
Efficiency (%)	-	-	70	45
Output Power (W)	-	-	12.00	25.00
Speed (rpm)	11000	-	9500	5500
Torque (mNm)	-	90.00	12.00	45.00

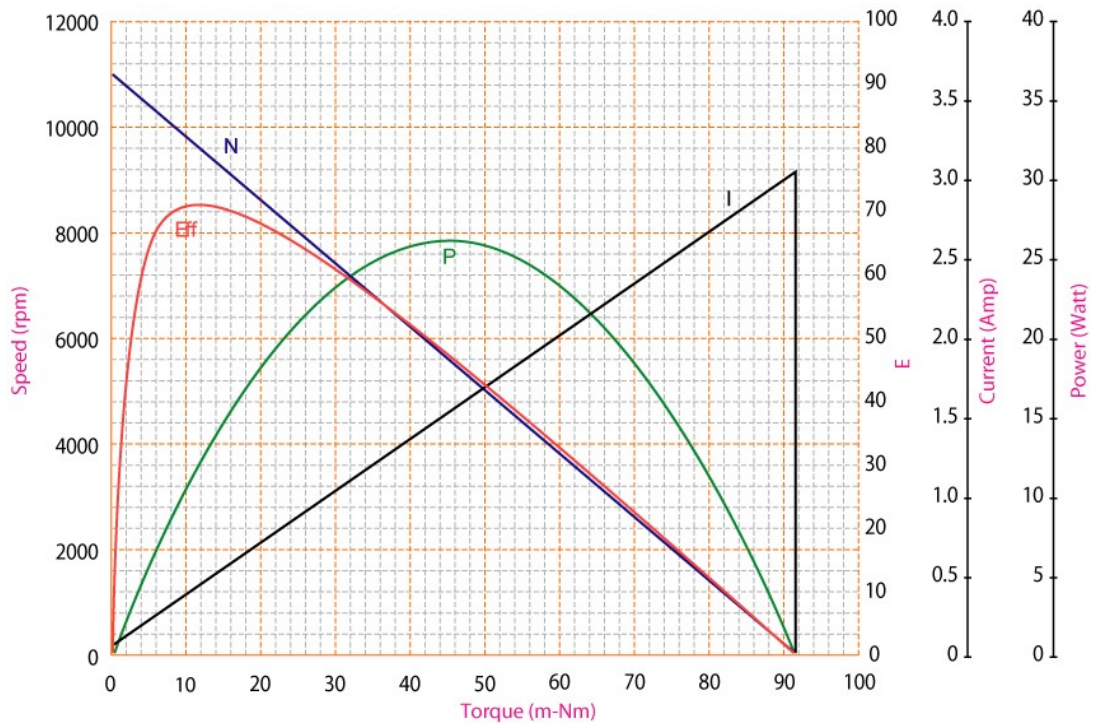
Application Examples:

Foot Massagers

Drawing:



Performance Curves:



Units in Metric